

Live Tableau

What is a tableau?

- A group of models or motionless figures representing a scene, historic event, or academic concept.

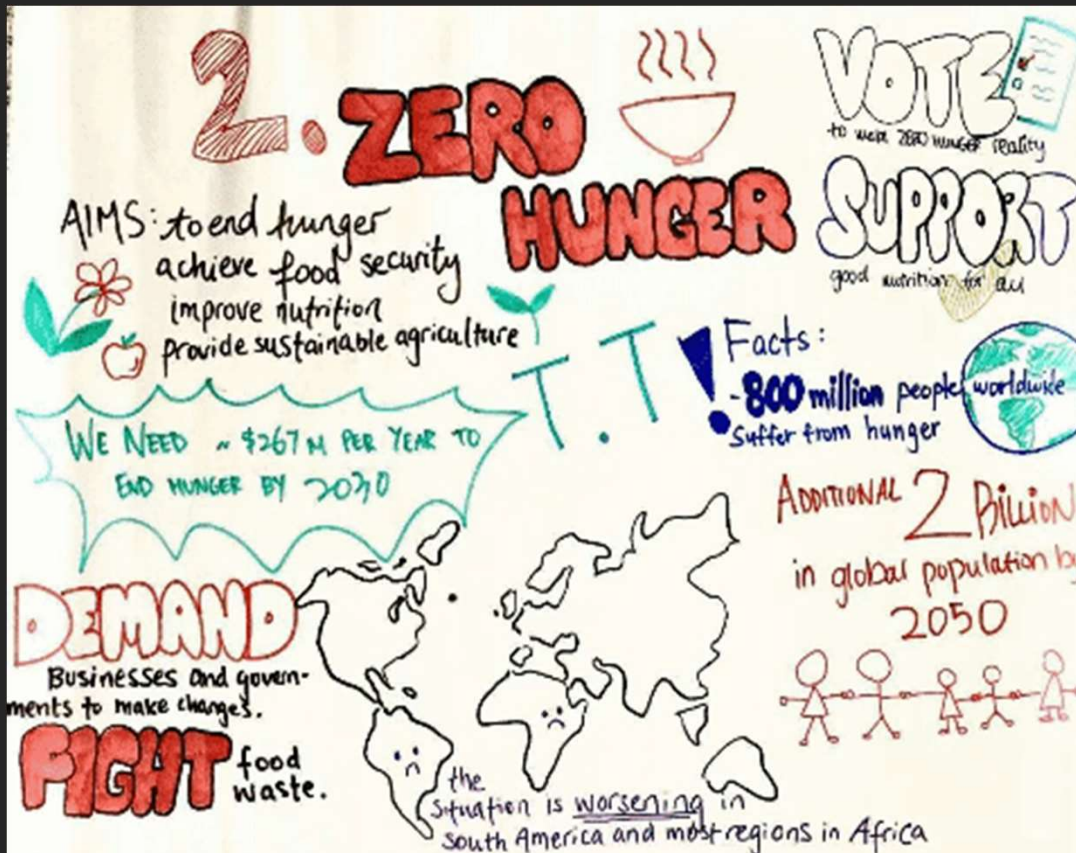
What is the aim of session?

- Refresh you with the wide range of concepts considered in the module; offer a practical means to ground and apply abstract ideas; and an outlet to think critically and reflexively about the relationship between environmental science and policy;

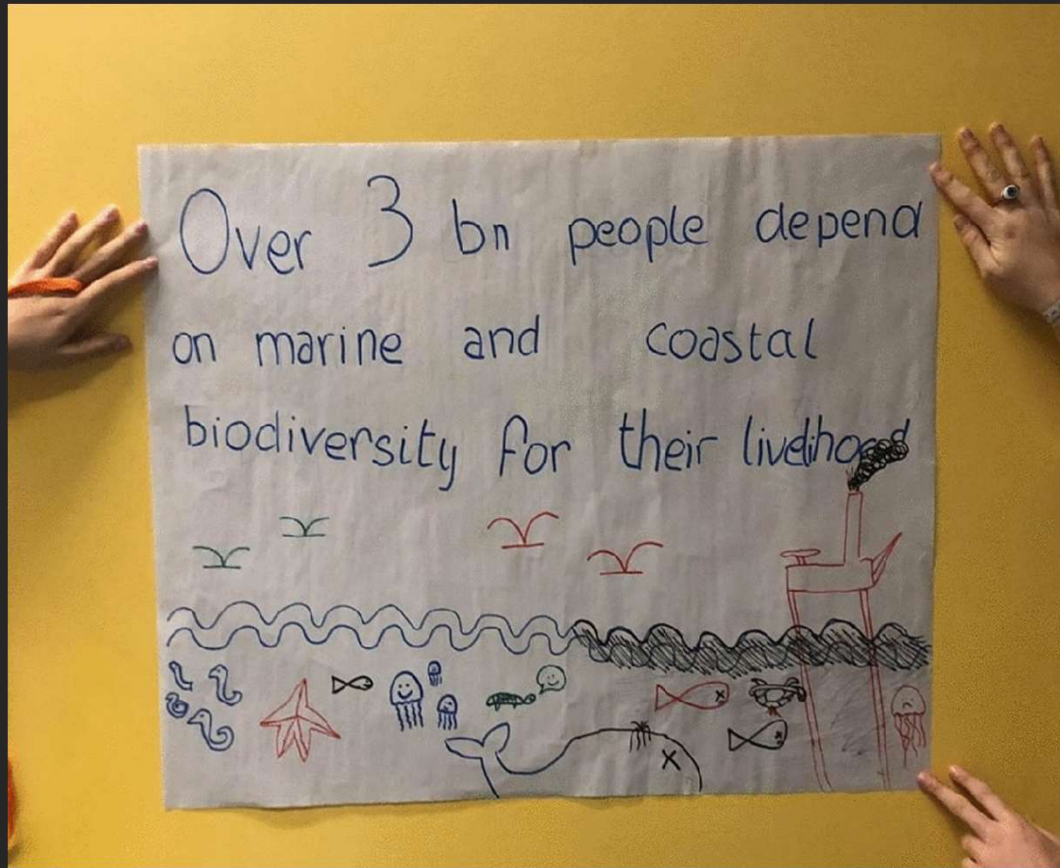
What are the learning outcomes?

- L1: A deeper, more practical, and visual engagement with key concepts from across the module;
- L2: Refine effective communication skills and teamwork;
- L3: Develop critical and reflexive thinking;

Sustainable Development Goal: Zero Hunger



Sustainable Development Goal: Marine Pollution





Fatal error!
Please contact support.
OK

Computer says “no”! One device won’t speak to another

1. Linear Model



2. Co-Production



3. Open Access



4. Advocacy



5. Multiple Streams Theory



6. Data Friction



7. Civic Epistemologies



8. Evidence-Based Policymaking



9. Democratizing Expertise



Key question:

How can your chosen concept help us better understand the relationship between environmental science and policy?

Simple Rules:

- Nominate a leader, photographer, researchers, and note-taker. Make sure the roles are spread out evenly within your group.
- Use the coin to break any deadlocked decisions.
- Pick a maximum of three items to help you with your tableau.
- **Photographs must be taken in landscape. Turn your phone lengthwise so that you are holding it with both hands.**

Keats:

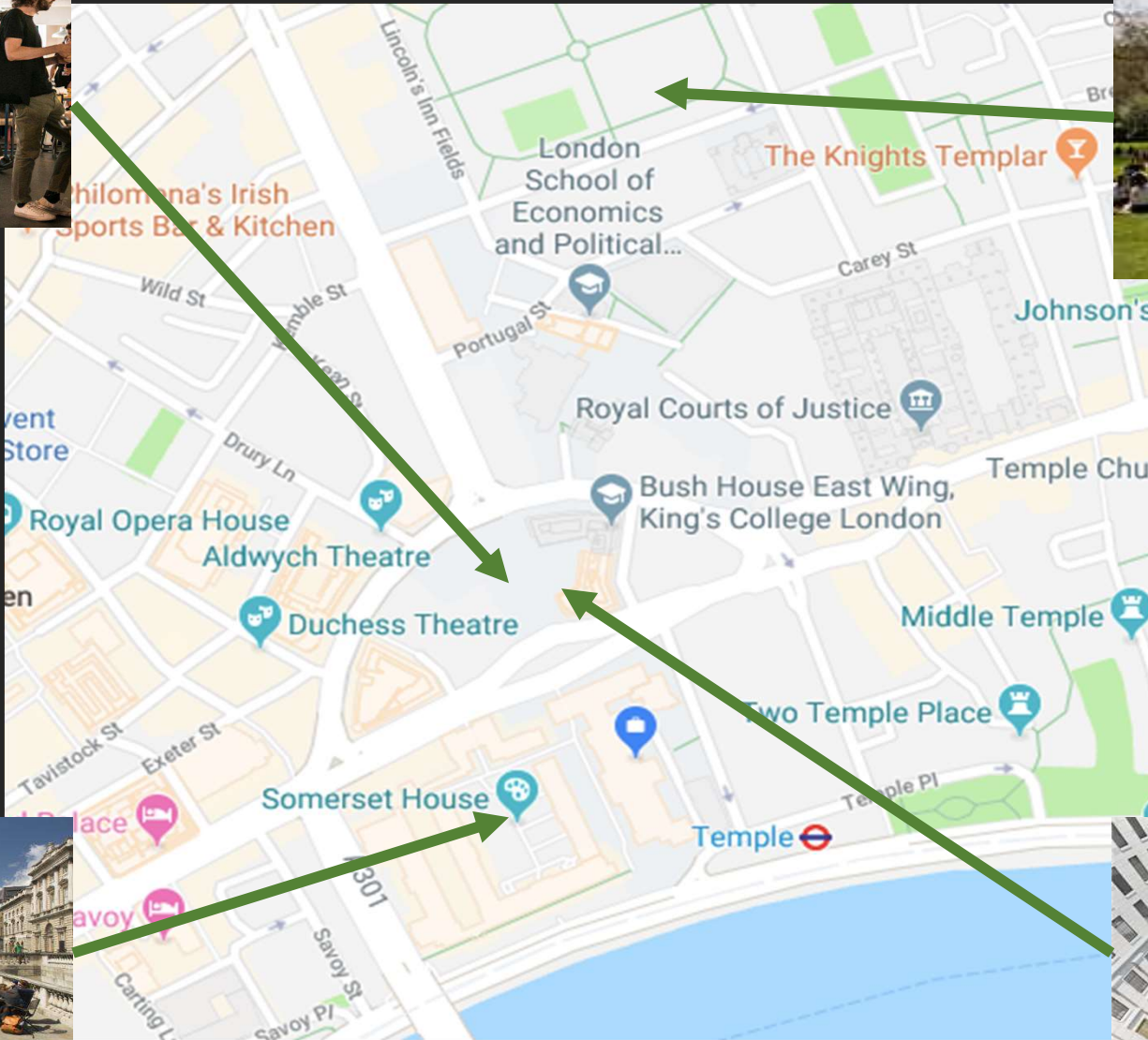
There are two files on the module page under the tab “Putting science and policy in their place” in a folder called “Live Tableau” to help get you started.



Photographs must be taken in LANDSCAPE!!!



The Vault



Lincoln Fields



Somerset House



Bush House

Structure

1. Assemble in small groups, within your seminar classes, and pick your concept from one of four options;
2. Use your 'making concepts visual' kit and materials produce a poster distilling the key details of your concept;

--- DESIGNATED ROOMS: CAMILLA'S GROUPS – 1.09 AND 1.11 BHSE; GEORGE'S GROUPS – 2.07 AND 2.08 BHSE; ROXANA'S GROUPS – 2.09 BHSE ---

3. Photograph both your poster and tableau and turn them into a GIF;

--- BACK IN THE LECTURE ROOM, 2.09 BHSE, BY 13.30PM LATEST ---

4. Speed-round of presentation (1min per group);
5. Vote and prize-giving!